

*Made in Carroll, Iowa*  
ESTD - 1974

THE WORLD'S FINEST RIMFIRE RIFLES AND PISTOLS







## BUILD IT BETTER

Build it better is more than a mantra. It is a lifestyle that is based on attitude, mindset and discipline. You embrace it because you are determined to be better today than you were yesterday. You steadfastly pursue your passions and are humble in your pursuit. You are willing to hold yourself to a higher standard and tenaciously push forward with an unwavering persistence.

You recognize that “handcrafted” doesn’t always mean “well-crafted,” and that “Made in the USA” doesn’t always equate to quality. You deserve firearms that are designed and engineered to the highest standards using only the best possible materials and technologies.

The word standard is not in your vocabulary. You never settle, and neither do we.



## THE EVOLUTION OF THE WORLD'S MOST ACCURATE RIMFIRE RIFLE

REGARDLESS OF THE RIFLE CONFIGURATION, THE VOLQUARTSEN PLATFORMS FEATURE MANY OF THE SAME ATTRIBUTES AND TECHNOLOGIES:

- + CNC-machined receivers that are completely machined from a solid billet
- + Barrels are threaded into the receiver on all rifles<sup>1</sup>
- + Integral Picatinny rail on all rifles<sup>2</sup>
- + CNC-machined bolt featuring tuned extractor and round titanium firing pin
- + TG2000 trigger guard containing all wire-EDM components for a crisp, clean 2.25 trigger pull<sup>3</sup>

1. Excluding Ultralite 22 LR & Fusion Take-Down 2. Excludes the Ultralite 22 LR 3. Excluding 17 WSM trigger at 3-3.25 lbs.



## STAINLESS STEEL MODELS – IF-5, SF-1, DELUXE, AND CLASSIC RIFLES



We offer four configurations of our stainless steel barrel and all are very similar in terms of accuracy and performance. Each barrel features match tolerances in both the bores and chambers and are measured using the latest digital gauging equipment. All of our barrels are stress relieved multiple times throughout the manufacturing process. Once the rifling, chambering and machine work are complete our barrels undergo a machine honing and lapping treatment that not only helps in keeping the barrel clean but also eliminates the need for a tedious break in.

### Which Stainless Steel Barrel is right for you?

There is no wrong decision and it is entirely dependent upon individual shooting preferences. For example, are you shooting from a bench, prone, or off-hand position? Some shooters prefer the weight of a non-fluted barrel, where others prefer the balance of a lighter barrel such as the I-Fluted model.

# IF-5

## OUR SIGNATURE RIFLE

I-Fluting is the latest generation of fluting patterns and is unlike any other fluting pattern available. In addition to the dramatic appearance, the innovative I-Flute design is extremely functional. It reduces more weight and creates more surface area than any of our other fluting designs, eliminating approximately 12 oz of overall rifle weight.



LENGTH: 38.5"	BARREL: 20.5"	WEIGHT: 7 lbs 6 oz
---------------	---------------	--------------------

22 LR specs. See website for all caliber specs.

+ Signature  
I-Fluted barrel

+ Forward blow  
compensator,  
removable

+ .920" stainless  
steel bull barrel  
threaded into  
receiver

+ Stainless steel  
CNC-machined  
receiver

+ TG2000 signature  
crisp, 2.25 lb.  
trigger pull

+ Sub-MOA  
5 shot group  
accuracy

AVAIL CALS:

17 WSM 17 HMR  
22 WMR 22 LR



IF-5 with blue laminated thumbhole silhouette stock.



IF-5 with NIB Battleworn® plating and Magpul® stock

VOLQUARTSEN BUILD IT BETTER



# SF-1

## SNAKE-FLUTED BEAUTY

Snake Fluting is a truly unique method of cutting the barrel flutes. Not a spiral or helical flute, nor is it a conventional straight flute, but an eye-catching “snake” flute. Snake Fluting is positioned around the barrel to provide increased rigidity and longitudinal stiffness. The Snake Flutes also increase surface area to help cool the barrel during long, rapid fire strings. Snake Fluting reduces barrel weight by approximately 5 oz.



LENGTH: 37.5"

BARREL: 20.5"

WEIGHT: 7 lbs 12 oz

22 LR specs. See website for all caliber specs.

+ Snake Fluted barrel

+ Forward blow compensator, removable

+ .920" stainless steel bull barrel threaded into receiver

+ Stainless steel CNC-machined receiver

+ TG2000 signature crisp, 2.25 lb. trigger pull

+ Sub-MOA 5 shot group accuracy

AVAIL CALS:

17 HMR  
22 WMR 22 LR



SF-1 with Hogue® stock.

VOLQUARTSEN BUILD IT BETTER



DELUXE

## THE LEGACY LIVES ON

The Deluxe model features a straight fluted stainless steel barrel and removable 32-hole compensator. This signature design gets you back on your second shot quicker, reduces weight, and helps dissipate heat for incredibly accurate shots, every time.



LENGTH: 38.5"

BARREL: 20"

WEIGHT: 7 lbs 8 oz

22 LR specs. See website for all caliber specs.

+ Straight Fluted  
barrel

+ 32-hole  
compensator,  
removable

+ .920" stainless  
steel bull barrel  
threaded into  
receiver

+ Stainless steel  
CNC-machined  
receiver

+ TG2000 signature  
crisp, 2.25 lb.  
trigger pull

+ Sub-MOA  
5 shot group  
accuracy

AVAIL CALS:

17 WSM 17 HMR  
22 WMR 22 LR



Deluxe with McMillan® sporter stock.

# CLASSIC

## A TRUE CLASS ACT

The Classic is the foundation of all our semi-auto rifles. Its sleek, clean features appeal to those looking for a more traditional firearm. It has always been our goal to achieve bolt-action accuracy from a semi-auto and this begins with the barrel. Our stainless steel barrels feature match bore and chamber tolerances. These dimensions are proprietary to Volquartsen and have evolved from over 25 years of testing. Digital gauging equipment ensures that each barrel meets our stringent criteria.



LENGTH: 36"	BARREL: 18.5"	WEIGHT: 7 lbs 12 oz
-------------	---------------	---------------------

22 LR specs. See website for all caliber specs.

+ 1/2 x 28  
threaded barrel

+ Integral  
Picatinny Rail

+ .920" stainless steel  
bull barrel threaded  
into receiver

+ Stainless steel  
CNC-machined  
receiver

+ TG2000 signature  
crisp, 2.25 lb.  
trigger pull

+ Sub-MOA  
5 shot group  
accuracy

AVAIL CALS:

17 WSM 17 HMR  
22 WMR 22 LR



Classic with gray laminated wood sporter stock.

## LIGHTWEIGHT, SUPERLITE, AND ULTRALITE MODELS

Is the balance of a rifle more important than the weight?  
For many shooters, a heavier rifle that balances well can be easier to shoot than a lighter rifle where all the weight is on the muzzle.

Our Lightweight and Superlite rifles are designed for the uncompromising shooter aiming for balance and accuracy. Both rifles utilize our original Lightweight THM Tension Barrel. The only difference is the stainless steel receiver on the Lightweight versus the Type III hard anodized aluminum receiver on the Superlite, resulting in an approximately 8 oz. difference.

The Ultralite is our lightest rifle, originally designed specifically for rimfire steel shooters. It's based on our carbon fiber tension barrel design but features a smaller barrel diameter resulting in our lightest configuration, making it perfect for transitions from plate to plate in a rimfire challenge event.

SUPERLITE WITH BLUE LAMINATED THUMBHOLE STOCK  
AND ULTRALITE WITH THM TENSION BARREL



#### RIFLE SIMILARITIES:

- + All three are 16.5" in length and have a .920" bull barrel diameter.
- + The Lightweight THM Tension design is the original "lightweight bull barrel" and the four-piece design consists of a small diameter barrel with stainless steel end caps separated by a carbon fiber sleeve.
- + Heavy, bull barrel accuracy at less than half the weight.
- + Accurate, bull barrel harmonics instead of the vibration common with smaller diameter barrels.
- + This design creates an air space between the barrel and sleeve, allowing for better heat dissipation than other lightweight barrel designs.

#### RIFLE DIFFERENCES:

- + The Lightweight rifle is built on our stainless steel receiver; the Superlite and Ultralite models are built on a Type III hard anodized aluminum receiver.
- + The only noticeable difference in performance and durability between the two receivers is weight.
- + The Lightweight and Superlite feature a barrel threaded into the receiver and an integral Picatinny rail machined into the receiver. The Ultralite uses a more conventional wedge locking block to secure the barrel as opposed to a threaded receiver.
- + The Lightweight THM Tension Barrel is used on the Lightweight and the Superlite.
- + The Ultralite's Picatinny rail is removable allowing for the receiver to be drilled and tapped for a specific mount or red dot optic.

**LIGHT  
WEIGHT**

## IT'S ANYTHING BUT

True to its name in stature only, this rifle is a heavy-duty performer ideal for plinking, hunting, and all-around shooting. Our signature lightweight match-grade barrel with tensioned sleeve creates a rigid, accurate, lightweight barrel which offers all the accuracy of heavier barrels, without all the weight to hold or carry.



LENGTH: 37"	BARREL: 16.375"	WEIGHT: 5 lbs 15 oz
-------------	-----------------	---------------------

22 LR specs. See website for all caliber specs.

+ Taper honed bore and tensioned sleeve

+ Forward blow compensator, removable

+ 16.375" Lightweight THM tension barrel

+ Stainless steel receiver with threaded in barrel

+ TG2000 signature crisp, 2.25 lb. trigger pull

+ Sub-MOA 5 shot group accuracy

### AVAIL CALS:

**17 WSM 17 HMR**  
**22 WMR 22 LR**



Lightweight 17 WSM with McMillan® stock.

VOLQUARTSEN BUILD IT BETTER



# SUPER LITE

## NEXT LEVEL LIGHTNESS

Our Superlite is a breeze to carry and shoot, and is incredibly lightweight but, also extremely tough. Featuring our robust CNC-machined aluminum hard anodized receiver and our Lightweight THM tension barrel, the Superlite packs on the performance—just not the pounds.



LENGTH: 36.5"	BARREL: 16.375"	WEIGHT: 5 lbs
---------------	-----------------	---------------

22 LR specs. See website for all caliber specs.

+ Carbon fiber or Cerakote coated aluminum sleeve

+ 32-hole compensator, removable

+ 16.375" Lightweight THM tension barrel

+ Type III hard anodized black receiver

+ TG2000 signature crisp, 2.25 lb. trigger pull

+ Sub-MOA 5 shot group accuracy

AVAIL CALS:

17 HMR  
22 WMR 22 LR



Superlite with Hogue® stock and red Cerakote coated barrel.  
Multiple color options available.



# ULTRA LITE

## THE ULTIMATE IN WEIGHT AND BALANCE

The Ultralite rifle is built on our aftermarket receiver. It is still CNC-machined; however, uses a more conventional wedge-locking block to secure the barrel as opposed to a threaded receiver. The Picatinny rail on this one is also removable, allowing for the receiver to be drilled and tapped for a specific mount or red dot optic.



LENGTH: 37.5"

BARREL: 18.5"

WEIGHT: 4 lbs 6 oz

+ Black McMillan® stock

+ Aluminum forward blow compensator, removable

+ Carbon fiber THM tension barrel

+ Type III hard anodized black receiver

+ TG2000 signature crisp, 2.25 lb. trigger pull

+ Sub-MOA 5 shot group accuracy

AVAIL CALS:

22 LR



Ultralite with Hogue® stock



A woman with blonde hair, wearing a black t-shirt and blue jeans, is smiling and holding a grey rifle. She is standing in front of a large saguaro cactus in a desert environment. The background shows more cacti and desert vegetation under bright sunlight. A semi-transparent dark box contains the title and author information on the right side of the image.

# LESSONS FROM THE RANGE

KATIE PAVLICH

The 2nd Amendment maven, Fox News contributor,  
and best-selling author on life's most valuable lessons  
learned on the gun range.

“My shooting story started in the dirt of Arizona when my dad drove us out to a designated shooting pit. I was just a kid and lucky for me, we did that drive many times.”

In this grand journey called life, each of us is blessed with skills and abilities that carry us forward every day as we strive for our best. Along the way, we're forced to manage our time by balancing obligations to ourselves, our families, our work and to fighting for the principles we believe in.

As shooters, some of life's most valuable lessons and skillsets are learned on the gun range. Whether it's in the confined space of an indoor firing lane or the wide open, blue-sky spaces of America, lessons are learned that follow us through our sport and many other aspects of our lives. To be successful here requires drive, focus, commitment, patience, respect and discipline. These attributes aren't required once, but every single visit and their repetition builds a solid foundation for success.

My shooting story started in the dirt of Arizona when my dad drove us out to a designated shooting pit. I was just a kid and lucky for me, we did that drive many times. Along the back berm we set up our favorite targets, which were usually old coffee cans or empty milk gallons full of water. They were meant for fun, but the ultimate goal was getting ready for hunting season and improving our skills through consistent practice.

After dad let me take on the water targets, blowing the lids off down range and high fiving in celebrating, he meticulously worked his marked paper targets to sight in our rifles for the season. To be completely accurate, he carefully placed them with a range finder and meticulously measured groupings. He practiced, I practiced and when the day came for me to take down my first deer, the hard work paid off. Drive. Focus. Commitment. Patience. Respect. Discipline. They were all there.



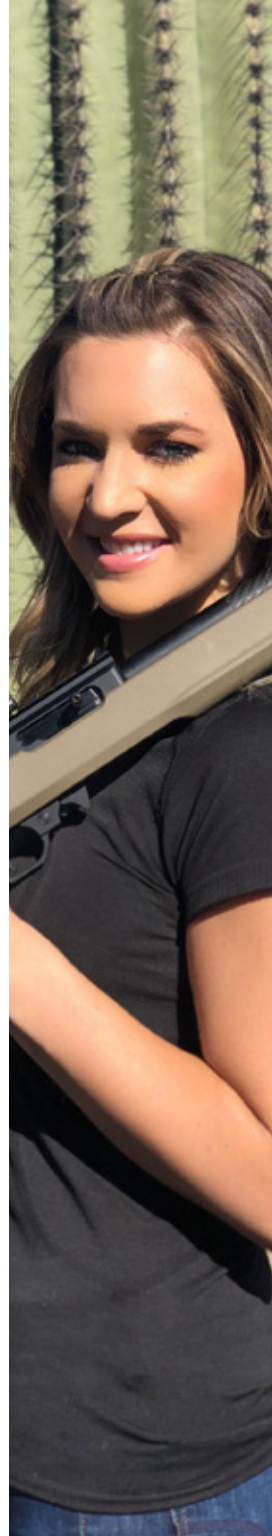
This was always the hidden lesson: Time at the range paid off at the biggest moments in the field and ultimately, in life.

Lessons from my dad have transferred to teaching and observations of my own. Excited yet nervous shooting beginners are constantly reaching for more information. After their first day, they leave with empowerment and a new sense of personal challenge to improve.

Experienced shooters and professionals spend years perfecting their craft by learning from each round that flies down the barrel. Watching, critiquing, changing and improving. Accepting the challenge to get out of the comfort zone, to go further than before and realizing adversity isn't a burden, but instead a blessing. Perfect days on range are rare. Mistakes, if we can learn from them, make us stronger and increase the value of hard fought victories. The gun range presents a unique setting to teach and those willing to learn, grow exponentially.

The obstacles on the range and the pressures of life are similar. Delivering the perfect shot at crunch time, whether shooting, giving a class presentation, landing a big business deal or winning an important debate.

As life moves forward and beyond the boundaries of shooting, as it inevitably does, lessons from the range follow us wherever we go. May we learn from them and pass them along to others on the way.



# VM-22

## ONE VERSATILE MACHINE

The VM-22 combines Volquartsen's Superlite barreled action with the Magpul® X-22 Hunter Stock, resulting in a performance match that's made in heaven. This combination makes it an extremely accurate, well-balanced, and lightweight all-around rifle that's comfortable to shoot off-hand or from the benchrest.



LENGTH: 36.5"

BARREL: 18.75"

WEIGHT: 5 lbs 5 oz

+ Magpul® X-22 Hunter stock

+ Forward blow compensator, removable

+ Superlite barreled action

+ Type III hard anodized aluminum receiver, with threaded in barrel

+ TG2000 signature crisp, 2.25 lb. trigger pull

+ Lightweight THM tension carbon fiber barrel with 1/2 x 28 threaded muzzle

AVAIL CALS:

22 LR

VOLQUARTSEN BUILD IT BETTER



# OPEN SIGHT

## OPEN UP ON THE COMPETITION

The Open Sight Rifle was specifically built for competition shooters looking to shoot limited, hunters looking for an alternative to optics, and shooters that prefer to keep things simple. We've taken the popular Hi-Viz® fiber optic front sight and paired it with an XS Sights® adjustable rear ghost ring – making it the perfect combination for any lighting conditions. This set-up provides quick acquisition for rimfire steel competitors, as well as pinpoint accuracy for target shooters.



LENGTH: 35"

BARREL: 16.5"

WEIGHT: 6 lbs

- + 1/2 x 28 threaded muzzle
- + Lightweight THM tension carbon fiber barrel
- + Superlite barreled action
- + XS Sights® rear ghost ring
- + TG2000 signature crisp, 2.25 lb. trigger pull
- + Stainless steel CNC-machined receiver
- + DLC coated, machined bolt
- + Magpul® X-22 Hunter stock

AVAIL CALS:

22 LR

VOLQUARTSEN BUILD IT BETTER

Cheyenne Dalton  
2016 NSSF Rimfire Worlds  
High Limited Lady



# FUSION TAKE-DOWN

## ULTIMATE VERSATILITY

Designed for shooters looking for ultimate versatility, our innovative Fusion Take-Down rifle is built to handle 17 and 22 caliber barrels. It is easy to switch out, without tools and in a matter of seconds. The first ever semi-auto rimfire rifle featuring quick-change barrels, this is a great go-to rifle for a variety of applications. And because it's easy to break down, it's also uniquely suited to compact storage. Both caliber barrels are included with the 17 HMR/22 WMR combo order.



LENGTH: 37.5"

BARREL: 18.5"

WEIGHT: 7 lbs 1 oz

+ 32-hole compensator, removable

+ Lightweight tension carbon fiber barrel

+ Type III hard anodized, CNC-machined aluminum receiver

+ Integral Picatinny rail upper, accessory rail below shroud

+ TG2000 signature crisp, 2.25 lb. trigger pull

+ Available in 17 HMR, 22 WMR, or combo of both calibers

AVAIL CALS:

**17 HMR + 22 WMR**  
or select one caliber



- Available in 17 HMR, 22 WMR or combo of both calibers
- Easily interchangeable, lightweight tension carbon fiber barrels
- Quick take-down for compact transporting



# THE SUMMIT : REDEFINED.



The Summit bolt action 22 LR is based on a concept originally developed by Primary Weapons Systems. The Volquartsen Summit represents the combination of their innovative design and 40+ years of our own rimfire experience.

Designed for both competition shooting as well as small game hunting, this unique rifle is a straight-pull bolt action inspired by the 10/22 style platform. The CNC-machined receiver features an integral 20 MOA Picatinny Rail, making it the perfect rifle for any rimfire long range shooting.

The Summit is built using our lightweight carbon fiber barrel. It features a muzzle threaded 1/2 x 28, making it the perfect companion for your favorite suppressor. It doesn't get much quieter than a 22 LR bolt gun suppressed!

This innovative design is built for everyone from the junior just getting into shooting to the accomplished competitor.

We will be releasing several different models of the Summit in the very near future, but each will come standard with the quality features you've come to expect in a Volquartsen.



- + Straight-pull bolt-action
- + CNC-machined receiver featuring an integral 20 MOA Picatinny scope rail
- + Lightweight tension carbon fiber barrel
- + 1/2 x 28 threaded muzzle
- + Light and crisp 1.75 lb. trigger pull
- + Magpul® X-22 Hunter stock

AVAIL CALS:

22 LR  
17 MACH 2

# THE SUMMIT : .17 MACH 2



The .17 Mach 2 is considered by some the best small-game hunting cartridge available. Our Summit straight-pull bolt action chambered in .17 Mach 2 is the perfect rifle for this round.

The straight-pull design handles the increased pressures of the .17 Mach 2 cartridge without issue.

The CNC-machined receiver features an integral 20 MOA Picatinny Rail and a lightweight carbon fiber barrel. Barrel features a muzzle threaded 1/2 x 28, making it the perfect companion for your favorite suppressor.

The Summit .17 Mach 2 suppressed might just be the perfect squirrel gun.

MY FATHER DIDN'T  
TELL ME HOW TO LIVE;  
HE LIVED, AND LET ME  
WATCH HIM DO IT.

- CLARENCE B. KELLAND



A man with a beard and tattoos, wearing a grey cap, sunglasses, and large headphones, is smiling and holding a handgun. He is wearing a dark grey t-shirt with a circular logo that reads "VOLQUARTSEN 1974 FIREARMS". The background is a blurred outdoor setting with green trees.

# WORK DON'T WHINE

BRANDON LILLY

Inside the mindset of one of the strongest powerlifters of all time and how he continues to tenaciously push forward with an unwavering persistence.

“I became known as a tenacious competitor, and I challenged the best in the world, and at times I got the best of them because I found the best in myself.”

#### - INTRODUCTION -

**We constantly strive to be the very best at what we do. It's for this reason that we try and align our company with others that have achieved excellence in their given field. Regardless of the “game,” the traits and characteristics remain unchanged for those looking to reach the pinnacle. As a company, we are always trying to learn and push ourselves to be better tomorrow than we were today. After meeting Brandon at the SHOT Show in 2018 we knew, as an individual, he embodied those characteristics.**

--

2018 has been a year of reflection, change of direction, and growth. The simple statement “work don't whine” came to be my mantra as a young boy. My father was a workhorse, and if he put his time towards something you could believe it would be done, and done right.

I come from a powerlifting background, and I became known as a tenacious competitor, and I challenged the best in the world, and at times I got the best of them, because I found the best in myself. I remember many times the feeling of accomplishment for seeing my goals through. Then as my star was rising I suffered a terrible knee injury. 16 surgeries over four years to even begin to have me walking, and functioning like a normal human. The days of lifting at that level seemed impossibly behind me, but I continue on.

Since my injury I have deadlifted 840 lbs, I have bench pressed over 600 lbs, and squatted over 750 lbs. To say I'm stubborn is certainty, but to call it “crazy” I'm not sure it is. It's a



testament to belief in myself, and sticking to a well laid out plan. So using those same tools that made me a 340 lb. powerlifting champion, I decided to go against all I knew and set out long endurance goals. I wanted to be capable of everything, I wanted to better myself, I wanted the challenge.

Accomplishments thus far in 2018:

- Rowed 100,000m in 10 hours, 54 minutes to help our children with special needs, as well as our soldiers struggling with PTSD, and reintegration back into a normal life in the States.
- Rowed 8 marathons
- Rowed 41 half marathons
- Ran 2 full marathons in sub 6 hours
- Walked/jogged/ran a 5k every single day in 2018

To say this was difficult is an understatement, but beyond that I've committed to bow hunting, learning how to play guitar, and becoming better at other hobbies as well. Organization, and effort became the recipe of the day, rather than endless bouts of [complacency]. I became more focused on the man I want to be, and the things I needed to fulfill goals, became action. I started the process of “working” and ceased all “whining”.

The beauty of taking that control is the admission, and subsequent acceptance that I can do more. My dad used to tell us boys all the time “If you can fix something, work on it, if you can't, no use whining about it.” Looking at my life I've got so much I want to do, so much left to do, and the clock is ticking. I'm working on myself, you working on you?



# SCORPION 22 LR: THE CHOICE OF WORLD CHAMPIONS.

Kolby Pavlock  
2018 Rimfire World  
Overall Champion



The Scorpion 22 LR is the product of over 40 years of continual innovation, engineering and vision. It offers unbeatable accuracy and balance and is extremely lightweight, with models weighing under 2 lbs. Our proprietary, signature crisp 2.25 lb. trigger pull provides uncompromising quality. With the Scorpion, you can pick your poison – with different configurations for your frame, grip, barrel, and accessories to build your own customized set-up.

KC Eusebio  
2017 NSSF Rimfire Worlds  
Open Champion



SCORPION 22 LR FEATURES:

- + CNC-machined stainless steel barrel
- + Competition bolt standard
- + Integral Picatinny rail
- + Muzzle threaded 1/2 x 28
- + Limited model has a 6" barrel, Hi-Viz® front, and target rear sights
- + Open model has a 4.5" barrel and compensator
- + Type III hard anodized aluminum uppers
- + Custom configurations available – build your own at [Volquartsen.com](http://Volquartsen.com)

# SCORPION

LIMITED & OPEN MODELS

## NOTHING STRIKES LIKE IT

The Scorpion is the ultimate target pistol! Our LLV has been combined with our lightweight VC Target Frame to create a very lightweight and extremely accurate 22 LR. We also include our Competition Bolt as a standard item.



### Black Limited, 1911

- 6" black aluminum upper
- 1911 black aluminum frame
- Hi-Viz® front, and target rear sights
- Hogue® grips

LENGTH: 11.5"

BARREL: 6"

WEIGHT: 2 lbs 1 oz



### Black Open, 1911

- 4.5" black aluminum upper
- 1911 black aluminum frame
- Compensator
- Hogue® grips
- Multi-Port compensator

LENGTH: 10.4"

BARREL: 4.5"

WEIGHT: 1 lb 14 oz



### Black Limited, Target

- 6" black aluminum upper
- Target style black aluminum frame
- Hi-Viz® front, and target rear sights
- Volthane grips

LENGTH: 11.5"

BARREL: 6"

WEIGHT: 2 lbs 6 oz



### Black Open, Target

- 4.5" black aluminum upper
- Target style black aluminum frame
- Compensator
- Volthane grips
- Multi-Port compensator

LENGTH: 10.4"

BARREL: 4.5"

WEIGHT: 2 lbs 3 oz

# SCORPION

FTV MODELS

## NO RAILS, NO PROBLEM

The Scorpion, our ultimate target pistol, is now offered with a flat top upper! FTV models feature a Vortex Venom with 3 MOA dot, black DLC competition bolt, black anodized aluminum upper and frame. A sleek, modern design that you have to experience.



### Black FTV, 6"

- 6" black aluminum flat top upper
- 1911 black aluminum frame
- Vortex Venom optic, 3 MOA dot
- Hogue® grips
- Multi-Port compensator

LENGTH: 11.5"

BARREL: 6"

WEIGHT: 2 lbs 3 oz



### Black FTV, 4.5"

- 4.5" black aluminum flat top upper
- 1911 black aluminum frame
- Vortex Venom optic, 3 MOA dot
- Hogue® grips
- Multi-Port compensator

LENGTH: 10.4"

BARREL: 4.5"

WEIGHT: 2 lbs



## BATTLE WORN

- Proprietary battle worn finish
- 4.5" or 6" aluminum upper with compensator
- 1911 style aluminum frame
- Hogue® grips
- Accessory rail
- Target sights

LENGTH: 12.5"	BARREL: 6"	WEIGHT: 2 lbs 5 oz
---------------	------------	--------------------



## OD GREEN

- 4.5" black aluminum upper with compensator
- 1911 frame, OD green
- Hi-Viz® front, and target rear sights
- Hogue® grips
- Accessory rail

LENGTH: 10.4"	BARREL: 4.5"	WEIGHT: 2 lbs
---------------	--------------	---------------



## AMERICAN FLAG EDITION

- Cerakoted patriotism
- 4.5" or 6" upper with compensator
- 1911 style aluminum frame
- Hogue® grips
- Accessory rail
- Target sights

LENGTH: 12.5"	BARREL: 6"	WEIGHT: 2 lbs 2 oz
---------------	------------	--------------------



## SS TARGET BLACK

- Stainless steel, black nitride
- 6" stainless steel upper with compensator
- Target 22 style frame
- Brown/gray laminated wood grips
- Hi-Viz® front, and target rear sights

LENGTH: 12.5"

BARREL: 6"

WEIGHT: 3 lbs 5 oz



# SCORPION 22 MAG

- 6" stainless upper
- Completely CNC-machined from stainless steel
- Tungsten alloy bolt
- 4 lbs 2 oz weight
- VZ® composite grips
- 9 round magazine capacity

LENGTH: 11"	BARREL: 6"	WEIGHT: 4 lbs 2 oz
-------------	------------	--------------------

The Scorpion 22 Mag is built using only the highest quality materials and production processes available – so you get better ballistics than the 22 LR, yet maintain the same level of accuracy and performance found in all our guns. It's a new breed of pistol for small game and varmint control.

VOLQUARTSEN BUILD IT BETTER





## SCORPION HOLSTER

- Currently compatible with 1911 style and Target 22 style
- Approximately 4 oz.
- Safariland UBL and Blade-Tech TEK-LOK set-ups available
- Keep your Scorpion safe and secure



Safariland UBL



Blade-Tech TEK-LOK

VOLQUARTSEN BUILD IT BETTER



# BLACK MAMBA

## UNMATCHED AGILITY & SPEED

The Black Mamba combines features from our Scorpion 22 LR Target Pistol along with the push button takedown functionality of the Ruger® MK IV™ platform. The Mamba features our LLV Competition Upper. Available in a 4.5" or 6" barrel length. Our design provides match-grade accuracy in a lightweight package. Competition-ready in an easy takedown configuration - the Black Mamba is everything you are looking for and more, whether you are a backyard plinker or competitive shooter.



### NEW FOR 2019!

- 4.5" or 6" black aluminum upper with stainless steel barrel
- Ruger® Mark IV™ 22/45 polymer frame
- Volquartsen accurizing kit with 2.25 lb. trigger pull
- Volquartsen competition bolt with DLC coating
- Volquartsen magazine release and magazine base pads
- Target sights
- Tandemkross® hiveGrip

LENGTH: 11.5"

BARREL: 6"

WEIGHT: 2 lbs 1 oz

## THE BUILD

Our LLV Competition Upper, available in a 4.5" or 6" barrel length, features a stainless steel barrel (with stainless steel breech) housed in an aluminum shroud. This design provides match grade accuracy in a lightweight package with three colors to choose from...black, FDE and OD green. The integral Picatinny rail on top and bottom is standard.

Our Competition Bolt with DLC Coating ensures smooth operation and functioning whether it's a day of plinking at the range or competing at the highest level.

The Black Mamba build utilizes a Ruger® MK IV™ 22/45 frame that has been retrofitted with our Accurizing Kit providing a crisp, clean 2.25 lb trigger pull. The frame has also been fitted with our magazine release which slightly raises the magazine and when used in conjunction with our magazine base pads (included standard) eliminates feeding issues. Competition ready in an easy takedown configuration.

Nothing moves with the agility and speed of the Black Mamba.



OD Green Upper



FDE Upper

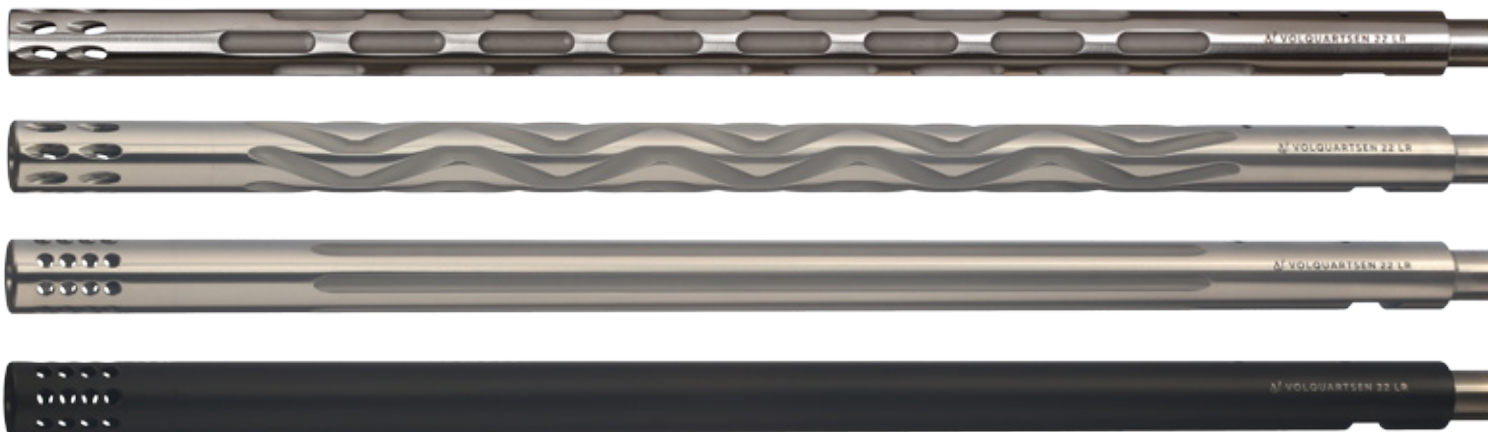


# BARRELS

RIFLE

## SUPERIOR FUNCTION & OPTIMAL ACCURACY

Our drop-in .920" bull barrels set the standard in accuracy and performance for rimfire barrels. Each barrel is digitally measured and inspected. We've developed our unique chamber to provide optimal accuracy but also superior function. Several fluting options available.



Stainless Steel Match .920" bull barrels



Lightweight Barrels for Ruger® 10/22 and 10/22 Takedown

# BARRELS & UPPERS

PISTOL

## BALANCE, VERSATILITY, ACCURACY

Designed to withstand years of use, whether you're a serious hobbyist or a competition shooter. Our receivers feature a stainless steel breech and are precision-machined from a single piece of aluminum billet. An integral Picatinny rail is machined into the top of the upper. A contoured barrel reduces weight without sacrificing accuracy. Our barrels feature easy, drop-in installation and reduce weight while increasing accuracy. We can help you choose the correct one for your application.



Carbon fiber lightweight barrel and  
I-Fluted barrel with compensator for SW22 Victory®

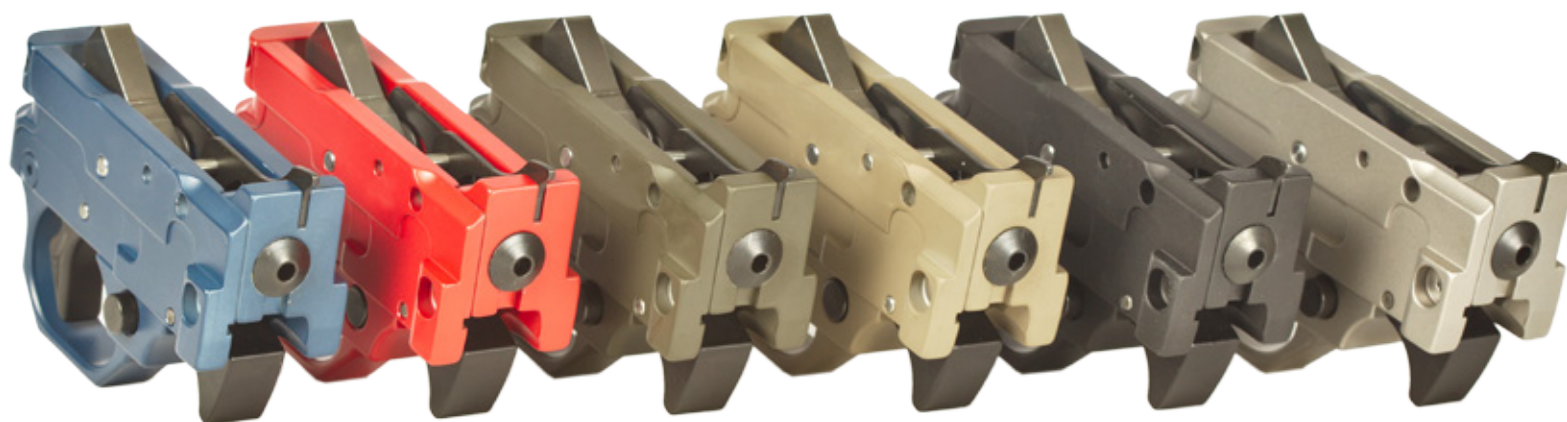


Ruger® MK IV Competition Uppers

# TRIGGERS & FRAMES

## SETTING THE STANDARD

The TG2000 is the drop-in replacement trigger guard that sets the standard for the Ruger® 10/22. It is machined from aluminum billet and precision WEDM-cut internal parts provide a crisp, clean 2.25 lb. trigger pull. Pretravel and overtravel adjustments can be set to your preference. The trigger is reset internally to eliminate any dragging or inconsistencies caused by a conventional trigger plunger.



TG2000



Target 22 Style Frame



1911 Style Frame

Complete CNC-machined frames with installed accurizing kit and 2.25 lb. trigger pull are available.

# STOCKS & GRIPS

## CREATE A SIGNATURE LOOK

Whether you are a long time gunsmith, hobbyist, or first-timer installing parts – we design our aftermarket parts to be a drop-in fit requiring little or no modifications. We engineer our aftermarket parts and accessories with the same care and attention to detail as we do our firearms, and no matter what it is, simply ‘Build it Better’.



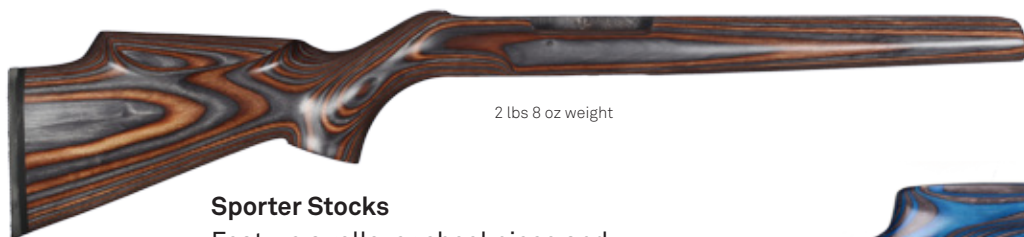
3 oz weight

**Ruger® MK III & MK IV Grips**  
Feature thumbrest, heelrest and finger grooves. Designed to provide a relaxed, steadier hold.



1 lb. 14 oz weight

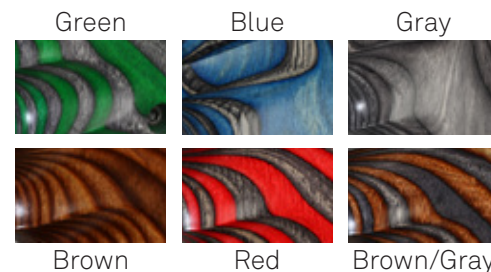
**Lightweight Thumbhole Stocks**  
Feature a high Monte Carlo comb and thumbhole to provide for upright head and hand positioning.



2 lbs 8 oz weight

**Sporter Stocks**  
Feature a rollover cheekpiece and curved teardrop grip with a wide forend.

**All laminated wood stocks & grips available in these colors**



2 lbs 8 oz weight

**Thumbhole Silhouette Stocks**  
Feature a high Monte Carlo comb and thumbhole to provide for upright head and hand positioning.

# ACCURIZING KITS/RUGER

## COMPETITION GRADE

Did you know our Competition Bolt for the Ruger® 10/22 was the first aftermarket bolt available for the 10/22? It eliminated the need to rework the factory bolt. No more having to square the bolt face, reduce headspace, or replace the internal parts on the factory bolt. The Diamond Like Carbon (DLC) coating has been tested through the rigors of competition and has proven itself time and time again. You get improved cycling, less lubrication and very minimal cleaning. Just wipe it down and you're good to go.



**Ruger® MK IV Accurizing Kit**  
(also available for MKII & MKIII)  
Complete drop-in kit includes Target Hammer, Target Sear, Target Trigger, Extended Bolt Release and Trigger Return Spring with Polished Plunger. All the internal components needed for the crisp, clean 2.25 lb. trigger pull. No stoning or fitting required.



**Forward Blow and 32-Hole Compensators**



4 oz base weight

**Ruger® MK II, MK III or MK IV Competition Bolts**  
Eliminate stovepipes, failures to fire, and improve overall performance. Features an Exact Edge Extractor as well as the SureStrike Firing Pin. Diamond Like Carbon (DLC) Coated.



**Competition Bolt for  
Ruger® 10/22**



**Replacement Receiver for Ruger® 10/22**

# ***GEAR/APPAREL***

AVAILABLE AT [VOLQUARTSEN.COM](http://VOLQUARTSEN.COM)



# THANK YOU

Here's to our shooters, hunters, competitors, dealers, ranchers, fathers, mothers, sons, daughters, plinkers, teachers, enthusiasts, supporters, collaborators, champions—and everyone in between. We're honored to see our work bring people together, and we couldn't be more grateful for your continued enthusiasm and support. – The Volquartsen Family

Volquartsen Firearms  
24276 240th Street  
Carroll, Iowa 51401  
712.792.4238  
info@volquartsen.com



@volquartsen\_firearms



@volquartsen



@volquartsenguns

## U.S.A. and INTERNATIONAL STOCKING DEALER PROGRAM

Become a Stocking Dealer and enjoy all the benefits of the program:

- Stocking Dealer pricing on rifles, pistols, and accessories
- Discounts on Volquartsen accessories
- Free Volquartsen apparel / merchandise
- Promotional material for your store
- Advertising & marketing support
- Listing on our Dealer Locator

For more information, call 712-792-4238 or email [info@volquartsen.com](mailto:info@volquartsen.com)

—  
PROUD SPONSOR  
OF THE  
RCSA  
**RIMFIRE  
CHALLENGE**  
AND THE  
SHOOTING SPORTS  
—

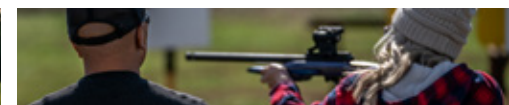
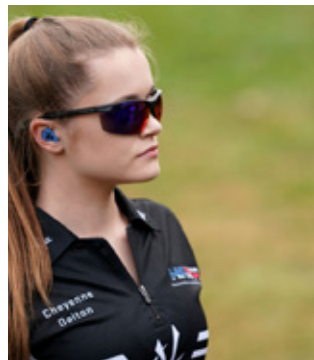
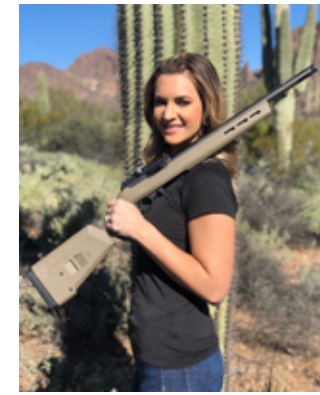
---

## THE INDUSTRY'S BEST WARRANTY

When you buy Volquartsen, you buy one of the finest names in firearms—as well as peace of mind. What does the industry's best warranty mean? Basically if you have a problem with anything that has been manufactured by Volquartsen and it hasn't been altered or modified, we will take care of it. For more warranty information, visit [Volquartsen.com/warranty](http://Volquartsen.com/warranty)

PATRON MEMBER OF





*Made in Carroll, Iowa*  
ESTD - 1974

BUILD IT BETTER



Volquartsen Firearms  
712.792.4238  
info@volquartsen.com  
© 2019 Volquartsen Firearms

[volquartsen.com](http://volquartsen.com)